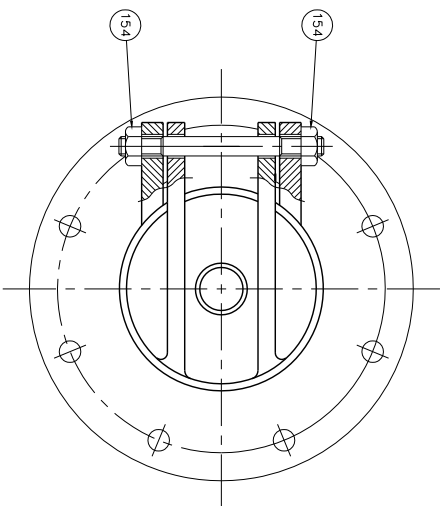


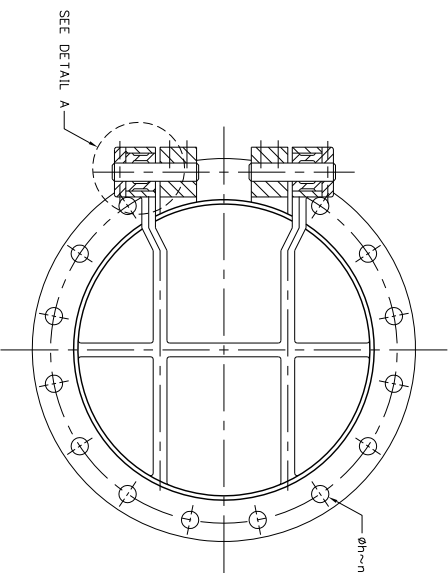
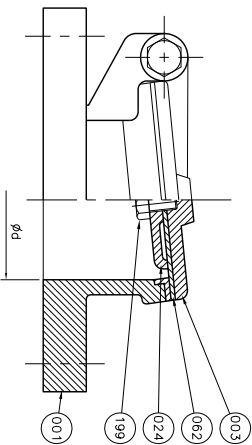
DESIGN	/	/
DRAFT	/	/
CHECKED	/	/

FIELD BOOK NO.	
PROFILE	ALIGNMENT

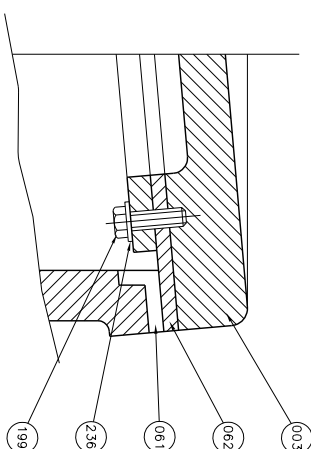
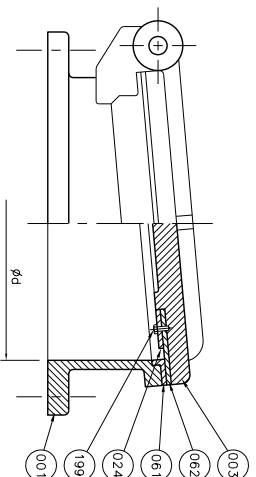
SURVEY	/	/
DRAWN	/	/
CHECKED	/	/



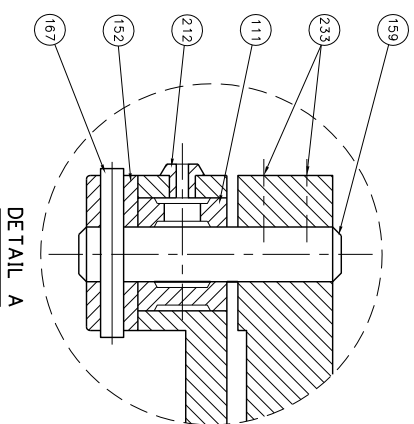
FLAP VALVE



FLAP VALVE
SIZE 350-1500 MM.



FOR SIZE 200-300 mm.



SIZE	FLANGED PN.10						
	φD	φC	φH	n	T		
350	505	460	22	16	30		
400	565	515	26	16	32		
450	615	565	26	20	32		
500	670	620	26	20	34		
600	780	725	30	20	36		
700	895	840	30	24	40		
800	1015	950	33	24	44		
900	1115	1050	33	28	46		
1000	1230	1160	36	28	50		
1100	1340	1270	36	32	53		
1200	1455	1380	39	32	56		
1400	1675	1590	42	36	62		
1500	1785	1700	42	36	66		

SIZE	FLANGED PN.10						
	φD	φC	φH	n	T		
80	200	160	18	8	22		
100	220	180	18	8	24		
125	250	210	18	8	26		
150	285	240	22	8	26		
200	340	295	22	8	26		
250	395	350	22	12	28		
300	445	400	22	12	28		

NO.	PARTS	MATERIAL	ASTM DESIGNATION	QTY
236	Spring Washer	Stainless Steel	A 276 Type 304	4
199	Disc Seat Bolt	Stainless Steel	A 276 Type 304	2
154	Disc Bolt & Nut	Stainless Steel	A 276 Type 304	1set
062	Disc Seat Ring	Rubber (Buna N)	D 2000 AA 7008	1
061	Body Seat Ring	Bronze	B 62	1
024	Seat Holder	Cast Iron	A 126 Class B	1
003	Disc	Cast Iron	A 126 Class B	1
001	Body	Cast Iron	A 126 Class B	1

NO.	PARTS	MATERIAL	ASTM DESIGNATION	QTY
233	Socket Screw	Stainless Steel	A 276 Type 304	4
212	Grease Screw	-	-	2
199	Seat Holder Bolt	Stainless Steel	A 276 Type 304	1set
167	Roll Pin	Stainless Steel	A 276 Type 304	2
159	Hinge Pin	Stainless Steel	A 276 Type 304	1
152	Hinge Pin Holder	Bronze	B 62	2
111	Bushing	Bronze	B 62	2
062	Disc Seat Ring	Rubber (Buna N)	D 2000 AA 7008	1
061	Body Seat Ring	Bronze or Stainless Steel	B 62 or A 276 Type 304	1
024	Seat Holder	Cast Iron	A 126 Class B	1
003	Disc	Cast Iron	A 126 Class B	1
001	Body	Cast Iron	A 126 Class B	1

HYDRO SHELL	-
HYDRO VALVE SEAT	-
HYDRO BACK SEAT	-
AIR SEAT	-
STEAM	-
TEST PRESSURE	-
WORKING PRESSURE	10 m.

REV.	DESCRIPTION	ENGINEER	DATE	DOH	DATE

KINGDOM OF THAILAND
MINISTRY OF TRANSPORT
DEPARTMENT OF HIGHWAYS

โครงการศึกษาออกแบบและก่อสร้าง
แบบทางหลวงหมายเลข 304 (จังหวัดยะลา)
แบบมาตรฐาน FLAP GATE

SUBMITTED
BY: *[Signature]*
PROJECT MANAGER DATE: DD/MM/YY

CIVIL ENGINEER : อภิรักษ์ พุฒบาล 20.62474
MECHANICAL ENGINEER : อภิรักษ์ พุฒบาล 20.22709

ARCHITECT : อภิรักษ์ พุฒบาล 21.8111908
ELECTRICAL ENGINEER : อภิรักษ์ พุฒบาล 21.8111908
DRAWING : อภิรักษ์ พุฒบาล 21.8111908

JUL 2018
CWT-MS-02

SCALE NOT TO SCALE
SHEET NO. 273