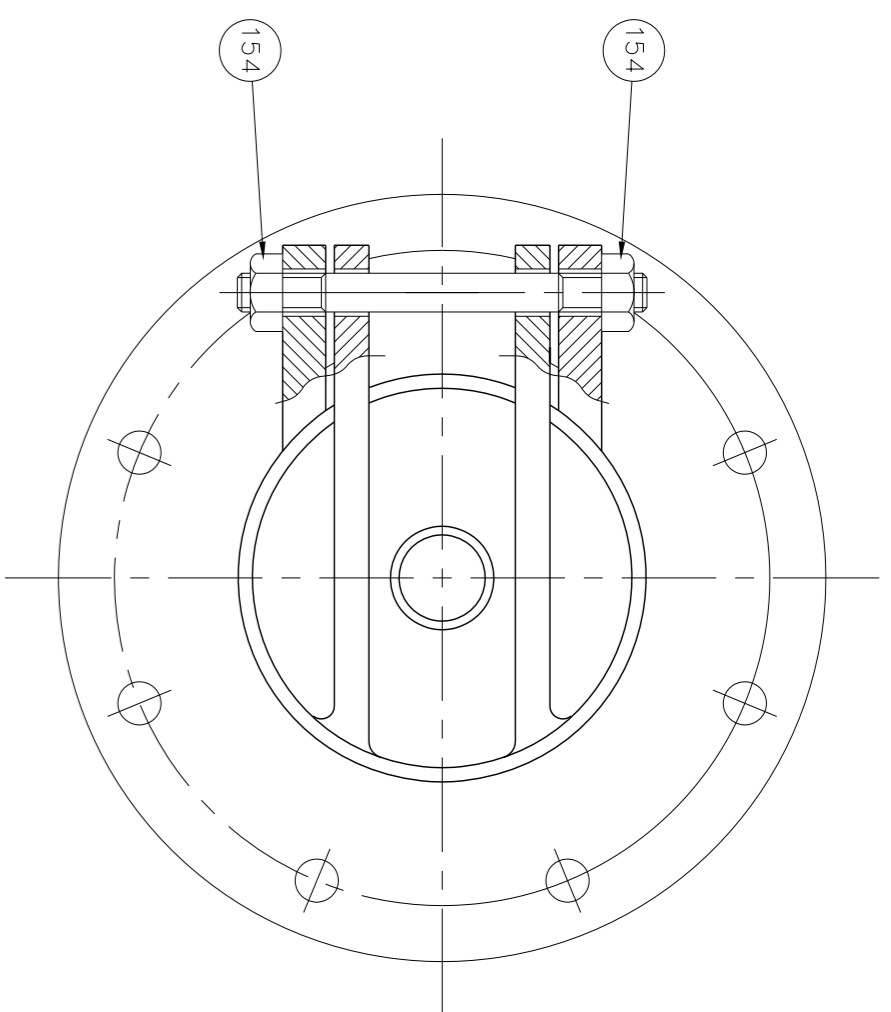


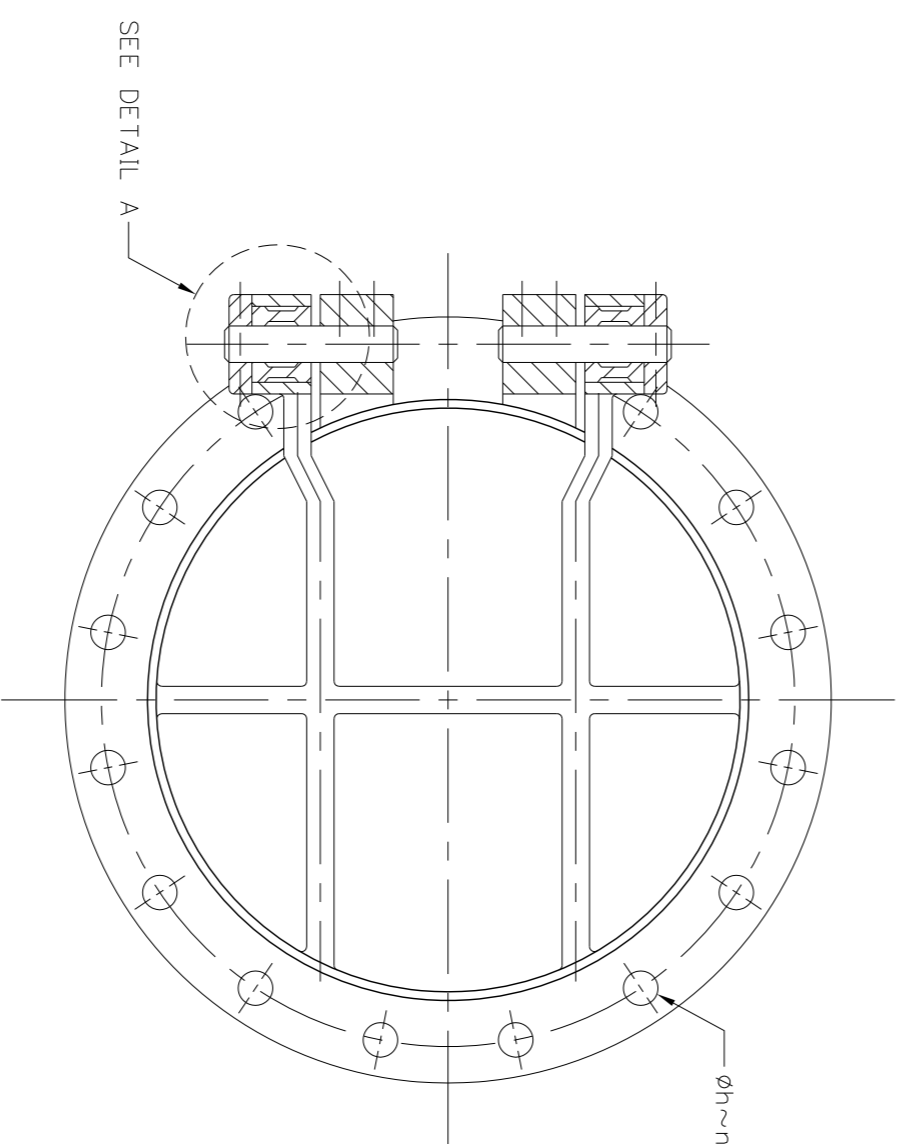
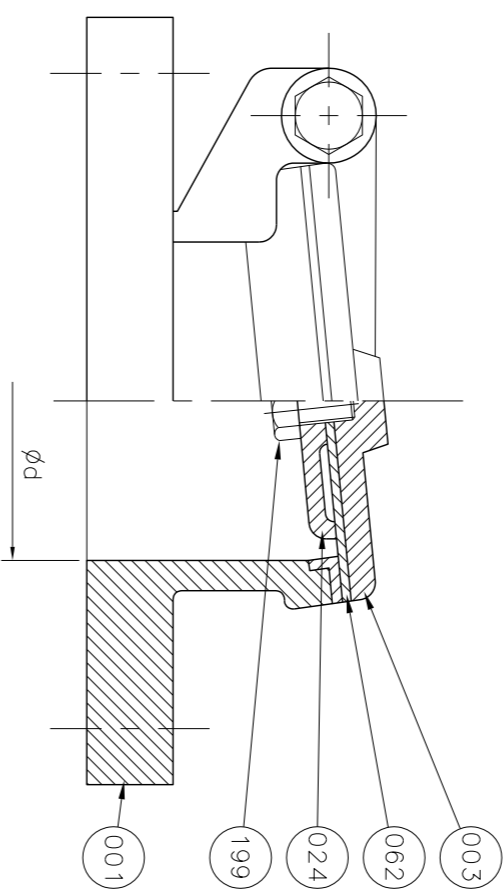
DESIGN	/	/
DRAFT	/	/
CHECKED	/	/

FIELD BOOK NO.	
PROFILE	ALIGNMENT

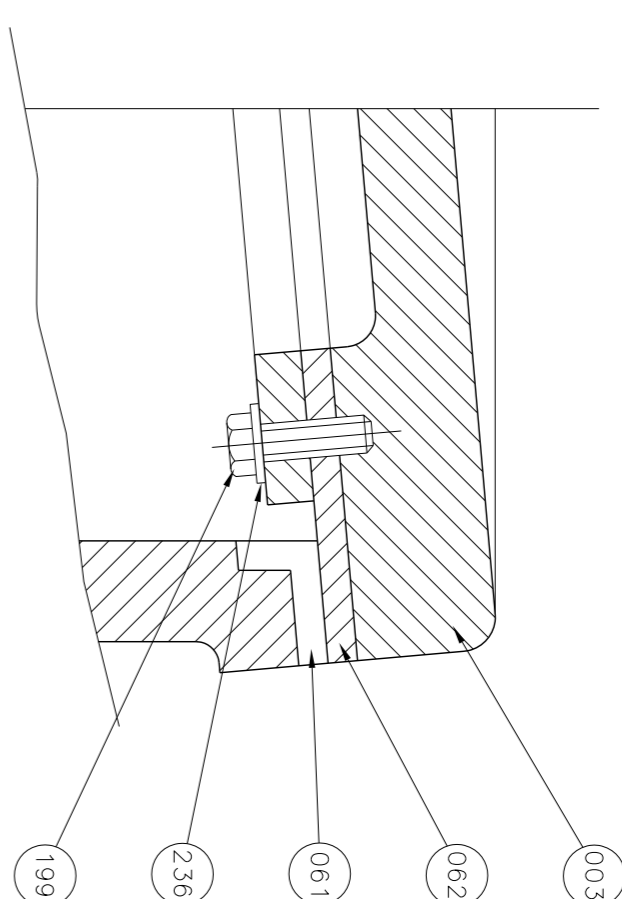
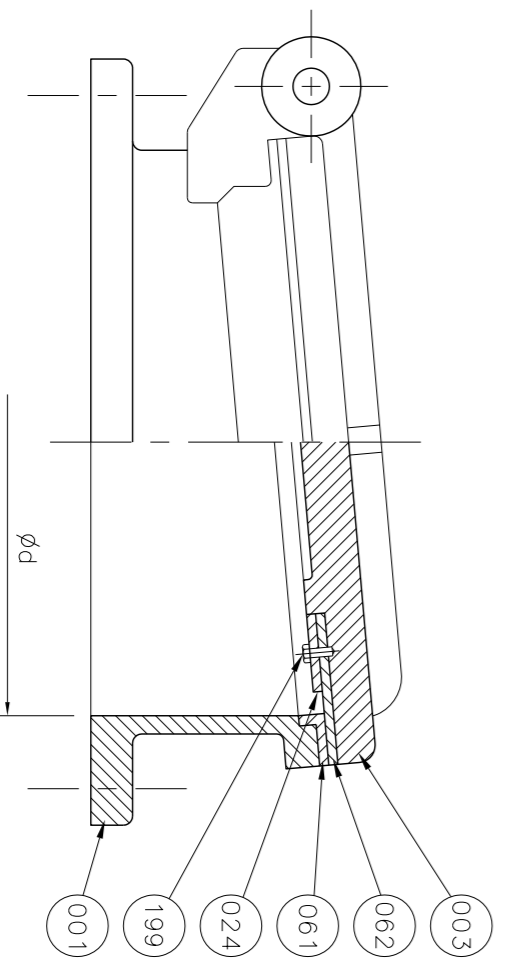
SURVEY	/	/
DRAWN	/	/
CHECKED	/	/



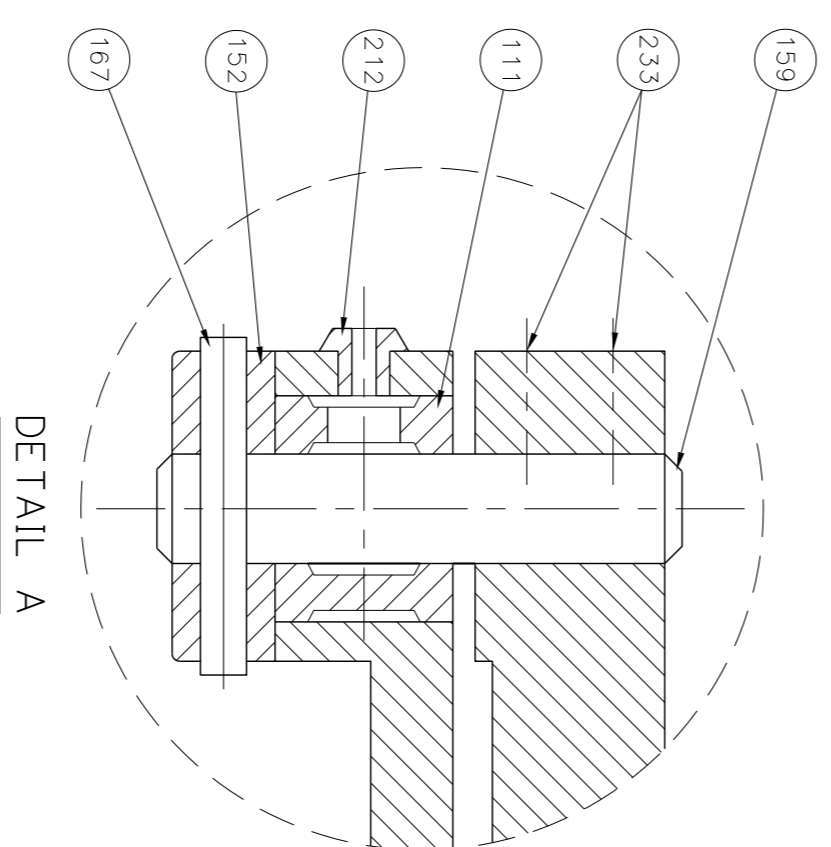
FLAP VALVE



FLAP VALVE
SIZE 350-1500 MM.



FOR SIZE 200-300 mm.



SIZE φd	FLANGED PN.10					
	φD	φC	φh	n	T	
350	505	460	22	16	30	
400	565	515	26	16	32	
450	615	565	26	20	32	
500	670	620	26	20	34	
600	780	725	30	20	36	
700	895	840	30	24	40	
800	1015	950	33	24	44	
900	1115	1050	33	28	46	
1000	1230	1160	36	28	50	
1100	1340	1270	36	32	53	
1200	1455	1380	39	32	56	
1400	1675	1590	42	36	62	
1500	1785	1700	42	36	66	

SIZE φd	FLANGED PN.10					
	φD	φC	φh	n	T	
80	200	160	18	8	22	
100	220	180	18	8	24	
125	250	210	18	8	26	
150	265	240	22	8	26	
200	340	295	22	8	26	
250	395	350	22	12	28	
300	445	400	22	12	28	

NO.	PARTS	MATERIAL	ASTM/DESIGNATION	QTY
236	Spring Washer	Stainless Steel	A 276 Type 304	1set
199	Disc Seat Bolt	Stainless Steel	A 276 Type 304	1
154	Disc Bolt & Nut	Stainless Steel	A 276 Type 304	1
062	Disc Seat Ring	Rubber (Same N)	D 2000 AA 7008	1
061	Body Seat Ring	Bronze	B 62	1
024	Seat Holder	Cast Iron	A 126 Class B	1
003	Disc	Cast Iron	A 126 Class B	1
001	Body	Cast Iron	A 126 Class B	1

MATERIAL LIST	
HYDRO SHELL	— bor
HYDRO VALVE SEAT	— bor
HYDRO BACK SEAT	— bor
AIR SEAT	— bor
STEAM	— bor
TEST PRESSURE	— bor
WORKING PRESSURE	— bor

NO.	PARTS	MATERIAL	ASTM/DESIGNATION	QTY
233	Socket Screw	Stainless Steel	A 276 Type 304	4
212	Grass Screw	—	—	2
199	Seat Holder Bolt	Stainless Steel	A 276 Type 304	1set
167	Roll Pin	Stainless Steel	A 276 Type 304	2
159	Hinge Pin	Stainless Steel	A 276 Type 304	1
152	Hinge Pin Holder	Bronze	B 62	2
111	Bushing	Bronze	B 62	2
062	Disc Seat Ring	Rubber (Same N)	D 2000 AA 7008	1
061	Body Seat Ring	Bronze or Stainless Steel	B 62 or A 276 Type 304	1
024	Seat Holder	Cast Iron	A 126 Class B	1
003	Disc	Cast Iron	A 126 Class B	1
001	Body	Cast Iron	A 126 Class B	1

MATERIAL LIST	
HYDRO SHELL	—
HYDRO VALVE SEAT	—
HYDRO BACK SEAT	—
AIR SEAT	—
STEAM	—
TEST PRESSURE	—
WORKING PRESSURE	10 m.

REV. NO.	DESCRIPTION	ENGINEER	DATE	CHECKED	DATE

KINGDOM OF THAILAND
 MINISTRY OF TRANSPORT
 DEPARTMENT OF HIGHWAYS

โครงการศึกษาการออกแบบเชิงบูรณาการ
 บนทางหลวงหมายเลข 304 (จังหวัดยะลา)
 แบบมาตรฐาน FLAP GATE

โดย: ทีมออกแบบเชิงบูรณาการ
 หน่วยงาน: กองเทคนิค (กรม)

SUBMITTED BY: *[Signature]*
 PROJECT MANAGER DATE: 00/MM/YY

CIVIL ENGINEER: อธิวัฒน์ พงษ์มาศ 7062474
 MECHANICAL ENGINEER: อธิวัฒน์ พงษ์มาศ 7062474

ARCHITECT: อธิวัฒน์ พงษ์มาศ 7062474
 ELECTRICAL ENGINEER: อธิวัฒน์ พงษ์มาศ 7062474
 DRAWING: อธิวัฒน์ พงษ์มาศ 7062474

JUL 2018
 SCALE NOT TO SCALE
 SHEET NO. 273